

their staff. Ladies! You work hard to make sure your patients feel good about themselves everyday, now it is your turn! We are going to have a mini presentation by Captek, followed by a relaxing day at the spa. This is your personal invitation to a day of luxury and pampering. Space is limited.

If you are interested in attending any of the events listed above, please contact Mike Grinstead at 800-456-1292 or mike@addental.com.

Vernice Brown, CDT, Joins Team ADL

Here at ADL Dental Laboratory, we are strongly committed to providing our clients with state-of-the-art technology, high quality restorations, and superb customer service. Keeping with our commitment, we are proud to welcome Vernice Brown, CDT, to our ever-growing team of wonderful technicians.

Vernice graduated from the University of Kentucky and Lexington Community College where she took part in one of the nation's top dental laboratory programs. Vernice will continue to build upon her many talents within the crown and bridge department. She looks forward to working hard for our clients and their patients.

3M ESPE/ADL Keeneland Day at the Races

The 3M ESPE/ADL Keeneland Day at the Races turned out to be quite memorable. Dan Krueger with 3M ESPE gave a very informative presentation. The weather did not cooperate, but the doctors and staff still came out to the track. The rain finally let up once we got to Keeneland, and everyone had a wonderful and exciting day at the track. Congratulations to Dr. Michele Beeler. She was the winner of a gift basket stuffed full of gourmet goodies. Thanks to all the doctors and staff who joined us. We greatly appreciate your friendship and your business. We hope to see you all this spring at Churchill!!!



Upcoming Events

ADL Dental Laboratory would like to wish all of our wonderful doctors and their staff a joyous holiday season! We will be closed on November 24 & 25, December 25 & 26, and on January 1 & 2.

November/December 2005

Please join ADL for its Celara Lunch and Learn series. This is a wonderful introduction to the Celara Denture Technique. Call to schedule a time and date.

Winter 2006

Looking for a Few Good Doctors

We are considering a narrow body implant course for early 2006. We are looking for twenty participants to attend this half day clinic at our laboratory. This hands-on course will teach participants to use the Atlas Narrow Body Implant System to support dentures. Participants will perform the entire technique including: drilling four osteotomies on a model, placing four Atlas implants, preparing a denture base for the reline and retrofitting the denture base over the implants placed in the model, utilizing the Tuf-Link Silicone Reline Material. The Atlas system will help expand your implant practice and is very user-friendly to both the dentist and the patient.

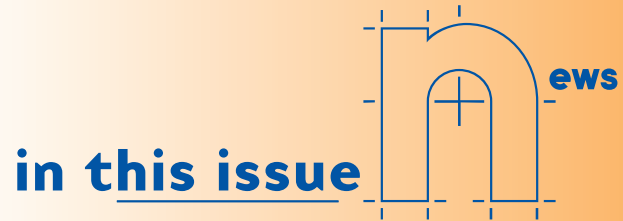
This workshop is geared toward general dentists initiating and completing the entire procedure from surgical placement of the implants to retrofitting the overdenture. Many GP's shy away from the surgical aspect of implant treatment because of the training, skill, experience, and cost necessary for most traditional implant systems. While the surgical placement of implants in the maxilla and posterior mandible will probably remain in the realm of periodontists and oral surgeons (who are welcome to attend the course), all GP's will find that placing four Atlas implants, anterior to the mental foramen without a surgical flap or sutures is simple and predictable. And it will be unnecessary to invest in expensive equipment. Space is limited, so please call Mike Grinstead at 800-456-1292.

"Day at the Z Spa"

ADL will be hosting a "Day at the Z Spa" for our women doctors and

news & views

in this issue



- 1** Upcoming Events
Vernice Brown, CDT, Joins Team ADL
3M ESPE™/ADL Keeneland Day at the Races
- 2** Lava™ Preparation Guide
Finally, Predictable Dentures!
More Good News from ADL
3i™ ARCHITECH PSR Cam StructSURE
Q&A with ADL's Chris Morris
2005 Captek/ADL Open



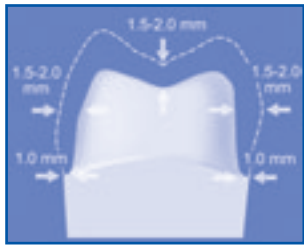
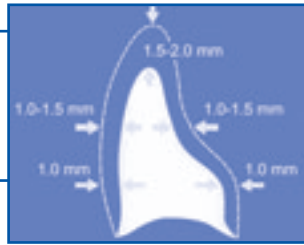
2005 Captek/ADL Open
Page 2

views

Lava™ Preparation Guide

Anterior Crown

- 1.5-2.0 mm incisal reduction
- 1.0-1.5 mm labial and lingual reduction
- Round the internal line angles
- Chamfer margin

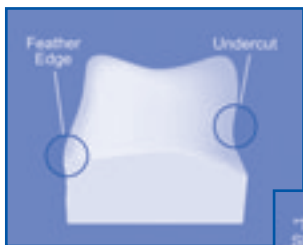
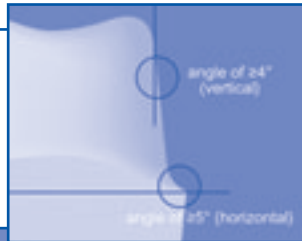


Posterior Crown

- 1.5-2.0 mm occlusal/incisal reduction
- 1.0-2.0 mm axial reduction
- Round the internal line angles
- Chamfer margin

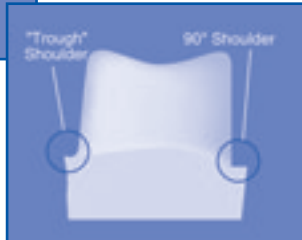
Preparation

The optimal preparation is a shoulder or chamfered preparation with a circumferential step or chamfer which must be applied at an angle of $>5^\circ$ (horizontal). The angle of the preparation (vertical) should be 4° or larger. The inside angle of the shoulder preparation must be given a rounded contour.



Contraindication

We do not recommend a feather edge, as it does not provide adequate reduction for the porcelain buildup, or the trough (or gutter) shoulder because the outer most edge may not be detected when scanned.



Finally, Predictable Dentures!

At ADL Dental Laboratory, we strive to provide you with the best possible service and the most cutting-edge techniques available today. That's why we are introducing you to the Celara™ Denture Technique. Celara makes denture treatment as predictable and profitable as crown and bridge while increasing patient satisfaction.

Developed by a prosthodontist, Celara has been successful in over 40,000 clinical cases. Celara removes the guesswork out of denture fabrication, by allowing us to communicate with each other by using a 3D blueprint of the denture. Best yet, you will be able to deliver a quality denture in two to three patient visits.

Applications include replacing a patient's existing denture "from scratch" and implant-retained dentures. Celara is a complete system for all denture cases and costs less than most traditional techniques.

- Final impressions and all records on first visit
- Deliver predictable dentures in two to three visits
- More economical than traditional denture fabrication
- "Pearl for Your Practice" in recent Dental Economics
- 2004 Top Product in Dental Products Report and Dental Lab Products Report

Celara allows ADL to provide you and your patients with the highest quality and the best-fitting dentures while saving your office valuable chairtime. Call Mike Grinstead today at 800-456-1292 to reserve your trial kit.

Celara™ is a registered trademark of Dentovations.

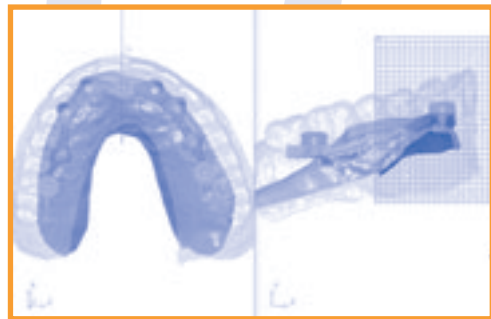
More Good News from ADL

Congrats to Carl and Kari Whited. They are the proud and sleep-deprived parents of baby boy Chase Matthew Whited, born September 2nd, 2005.

Our very own Kelly McAdams married Mr. Chad Coomes on October 22nd, 2005 at Lake Side Reflections in Jeffersonville, Indiana. Congratulations to Kelly and Chad.

3i ARCHITECH PSR Cam StructSURE Q&A with ADL's Chris Morris

With the advancement of CAD/CAM technology, the precision fit of CNC milled components has reached the removable area of the dental laboratory. ADL has taken hold of this advancement and made it an essential part of our overdenture and fixed hybrid restorations. The precision of this technology is difficult to match. CAM StructSURE starts out as a solid block of titanium alloy and is machined into a precision overdenture bar or base for a fixed hybrid prosthesis. The result is a more durable, passive fitting restoration.



Q: How is the procedure started?

A: That is the best part; there is no change to the original treatment plan other than having a verification index called an Implant Positioning Jig (IPJ) fabricated prior to or at the baseplate and wax occlusal rim appointment. The function of the IPJ is to verify the accuracy of the master cast well ahead of the bar fabrication. If alteration of the master cast is required, it is determined early, and adjustments are made.

Q: What is the main advantage to this system?



A: Since the overdenture bar or fixed hybrid structure is milled from a solid block of titanium alloy, the fit cannot be precisely matched with standard laboratory procedures. With the conventional lost wax technique used in the laboratory, there is a risk

of miscast, porosity, and non-passive fitting bar structure, all of which can be avoided with a CAD/CAM system. An additional benefit with titanium is the lack of weight for larger bar structures, a feature that has been noted by patients and doctors alike.

Q: What is the difference in cost?

A: By using CAM StructSURE, the price of the final restoration rises by less than 10% on average. However, this increase is greatly outweighed by the advantage of titanium's strength and longevity. There is no need for custom gold abutments and fluctuating metal prices to be figured into the final restorative cost, and your fee is maintained due to the fixed milling expense.



2005 Capterk/ADL Open

The 2005 Capterk/ADL Open at Covered Bridge was a great success. It was our inaugural golf event. The outing went so well, we are planning one for Spring 2006 and one for Fall 2006. All those interested in playing, feel free to contact mike@addental.com to make the short list for these future golf events. Congratulations go out to the First Place Team of Dr. Mark Hammond, Dr. Greg Karem, and Dr. Alan Wilkinson, with a spectacular round of 61! Thanks to all of the doctors who participated. We hope to see you on the course in 2006.

"Decide what you want. Decide what you are willing to exchange for it. Establish your priorities and get to work."—H.L. Hunt